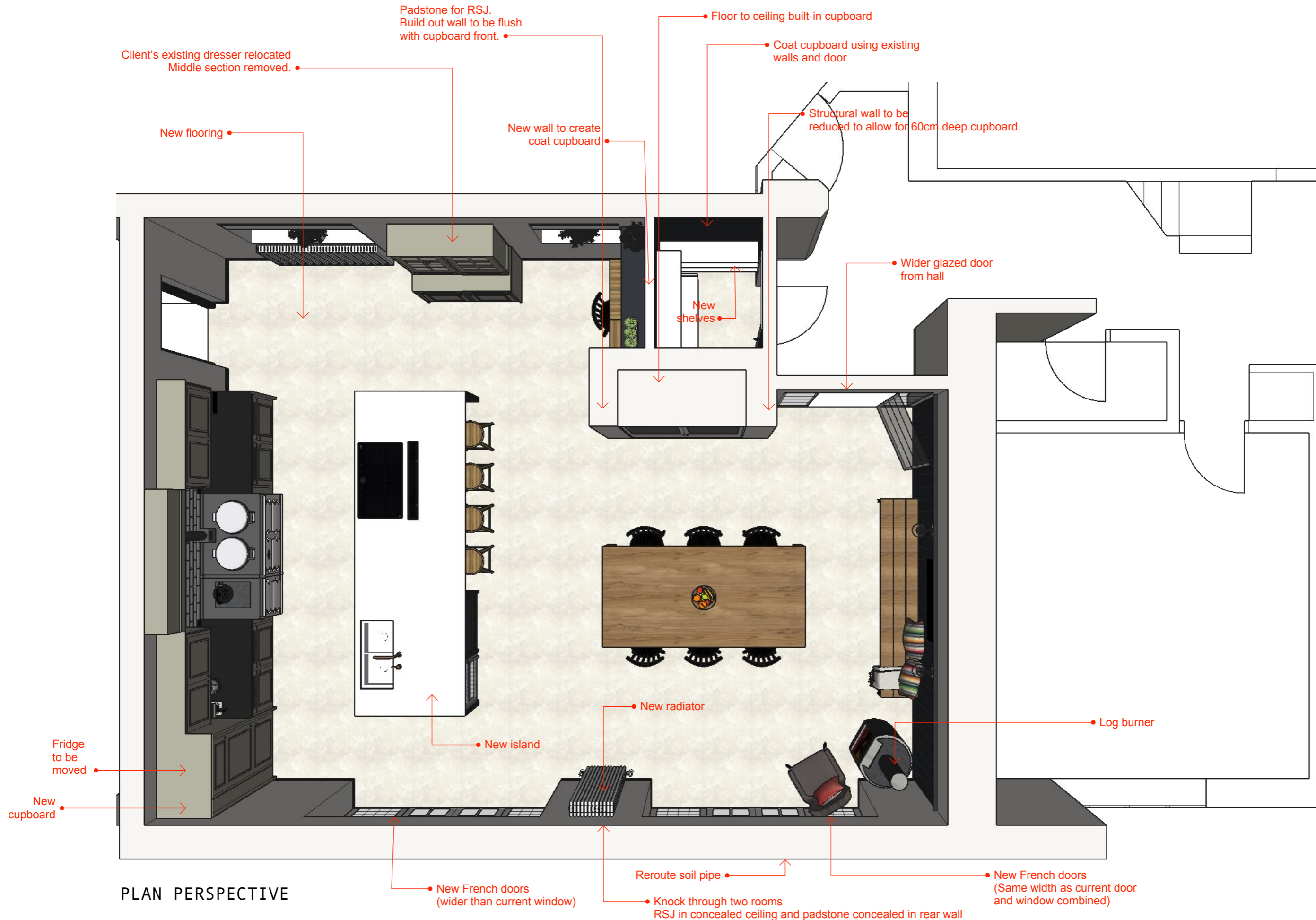
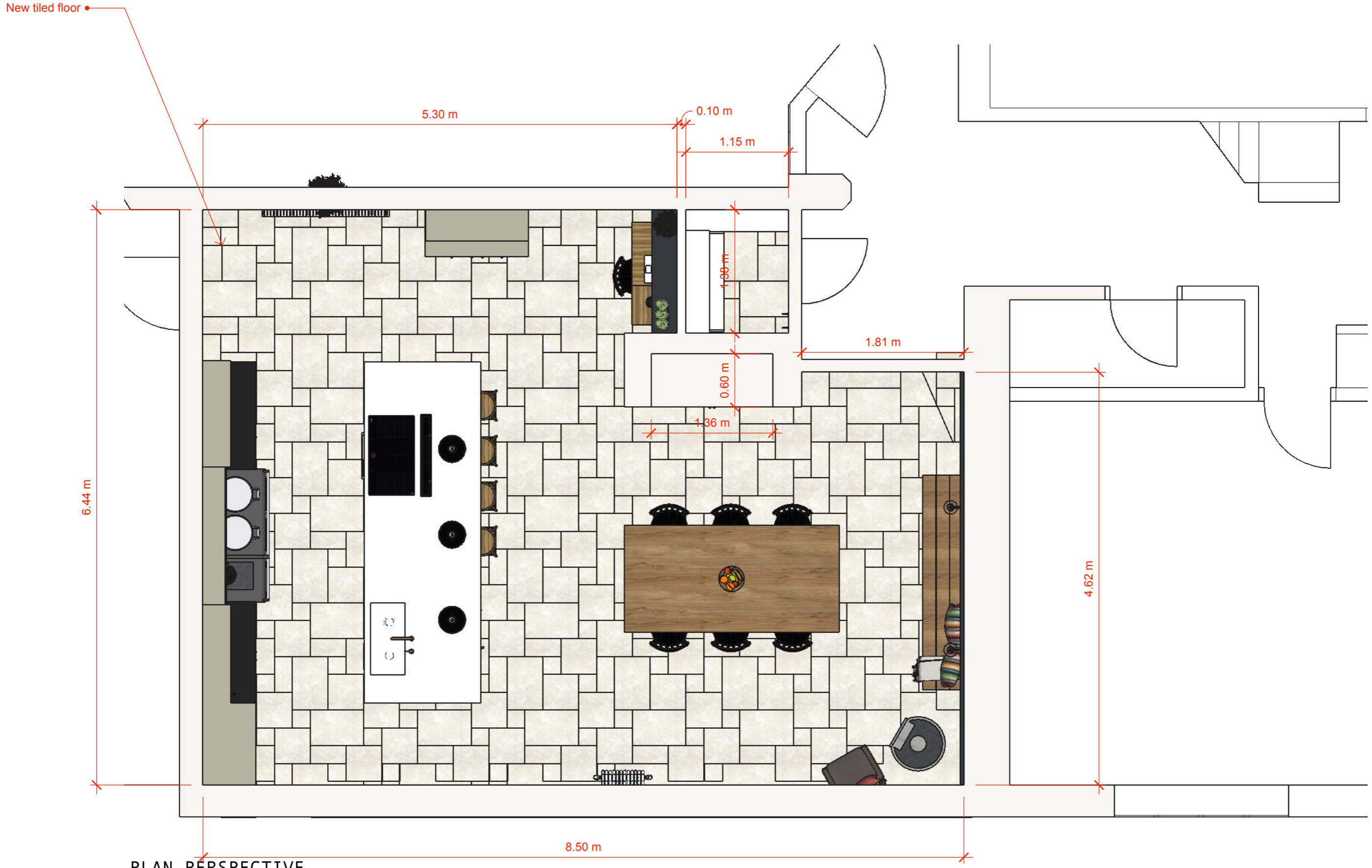


KITCHEN DESIGN PACK



PLAN PERSPECTIVE

PLEASE NOTE: This is an initial concept design. ALL ROOM DIMENSIONS ARE APPROXIMATE and must be checked by the supplier and contractors before orders are placed and work begins. ALL CABINET/FURNITURE SIZES ARE SUGGESTIONS and are subject to change acc. to the kitchen joiner's method of construction. JOINER & FITTER TO CHECK new appliances installation instructions before construction and fitting.



PLAN PERSPECTIVE

PLEASE NOTE: This is an initial concept design. ALL ROOM DIMENSIONS ARE APPROXIMATE and must be checked by the supplier and contractors before orders are placed and work begins. ALL CABINET/FURNITURE SIZES ARE SUGGESTIONS and are subject to change acc. to the kitchen joiner's method of construction. JOINER & FITTER TO CHECK new appliances installation instructions before construction and fitting.



PERSPECTIVE VIEW 1

PLEASE NOTE: This is an initial concept design. ALL ROOM DIMENSIONS ARE APPROXIMATE and must be checked by the supplier and contractors before orders are placed and work begins. ALL CABINET/FURNITURE SIZES ARE SUGGESTIONS and are subject to change acc. to the kitchen joiner's method of construction. JOINER & FITTER TO CHECK new appliances installation instructions before construction and fitting.

Paint colour same as tongue & groove. Makes desk area more inviting.

Noticeboard



Bench to provide extra Seating when table is fully extended

Extendable table seats 8-14

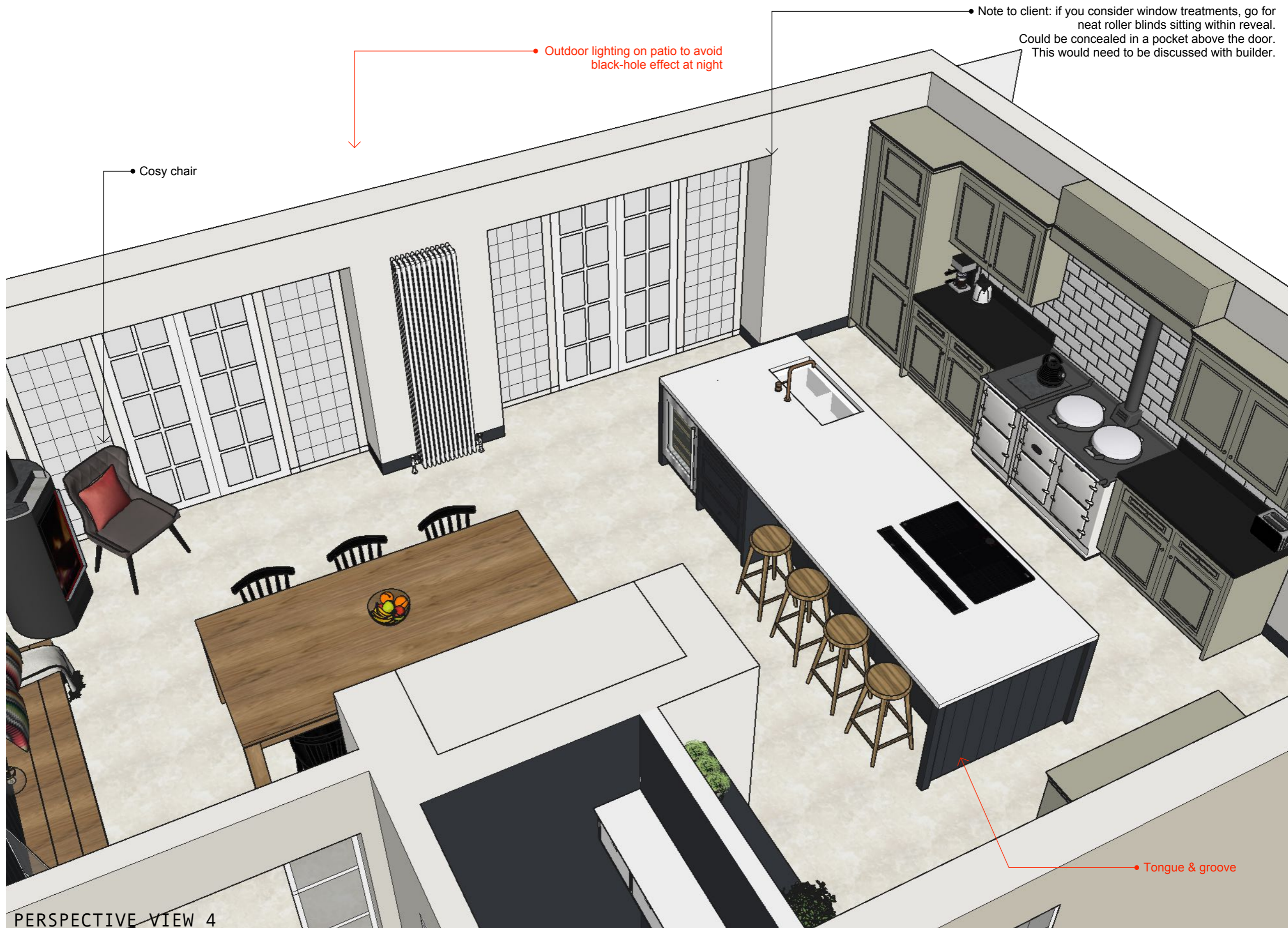
PERSPECTIVE VIEW 2

PLEASE NOTE: This is an initial concept design. ALL ROOM DIMENSIONS ARE APPROXIMATE and must be checked by the supplier and contractors before orders are placed and work begins. ALL CABINET/FURNITURE SIZES ARE SUGGESTIONS and are subject to change acc. to the kitchen joiner's method of construction. JOINER & FITTER TO CHECK new appliances installation instructions before construction and fitting.



PERSPECTIVE VIEW 3

PLEASE NOTE: This is an initial concept design. ALL ROOM DIMENSIONS ARE APPROXIMATE and must be checked by the supplier and contractors before orders are placed and work begins. ALL CABINET/FURNITURE SIZES ARE SUGGESTIONS and are subject to change acc.to the kitchen joiner's method of construction. JOINER & FITTER TO CHECK new appliances installation instructions before construction and fitting.



PLEASE NOTE: This is an initial concept design. ALL ROOM DIMENSIONS ARE APPROXIMATE and must be checked by the supplier and contractors before orders are placed and work begins. ALL CABINET/FURNITURE SIZES ARE SUGGESTIONS and are subject to change acc. to the kitchen joiner's method of construction. JOINER & FITTER TO CHECK new appliances installation instructions before construction and fitting.



Wide, glazed
Crittal-style door

ENTRANCE TO KITCHEN

PLEASE NOTE: This is an initial concept design. ALL ROOM DIMENSIONS ARE APPROXIMATE and must be checked by the supplier and contractors before orders are placed and work begins. ALL CABINET/FURNITURE SIZES ARE SUGGESTIONS and are subject to change acc. to the kitchen joiner's method of construction. JOINER & FITTER TO CHECK new appliances installation instructions before construction.



WALKING INTO THE ROOM

PLEASE NOTE: This is an initial concept design. ALL ROOM DIMENSIONS ARE APPROXIMATE and must be checked by the supplier and contractors before orders are placed and work begins. ALL CABINET/FURNITURE SIZES ARE SUGGESTIONS and are subject to change acc.to the kitchen joiner's method of construction. JOINER & FITTER TO CHECK new appliances installation instructions before construction and fitting



New worktops

Adjusted dresser

VIEW TO UTILITY

Cupboard contains workings for downdraft extractor

PLEASE NOTE: This is an initial concept design. ALL ROOM DIMENSIONS ARE APPROXIMATE and must be checked by the supplier and contractors before orders are placed and work begins. ALL CABINET/FURNITURE SIZES ARE SUGGESTIONS and are subject to change acc. to the kitchen joiner's method of construction. JOINER & FITTER TO CHECK new appliances installation instructions before construction and fitting.



VIEW FROM UTILITY

PLEASE NOTE: This is an initial concept design. ALL ROOM DIMENSIONS ARE APPROXIMATE and must be checked by the supplier and contractors before orders are placed and work begins. ALL CABINET/FURNITURE SIZES ARE SUGGESTIONS and are subject to change acc.to the kitchen joiner's method of construction. JOINER & FITTER TO CHECK new appliances installation instructions before construction and fitting.



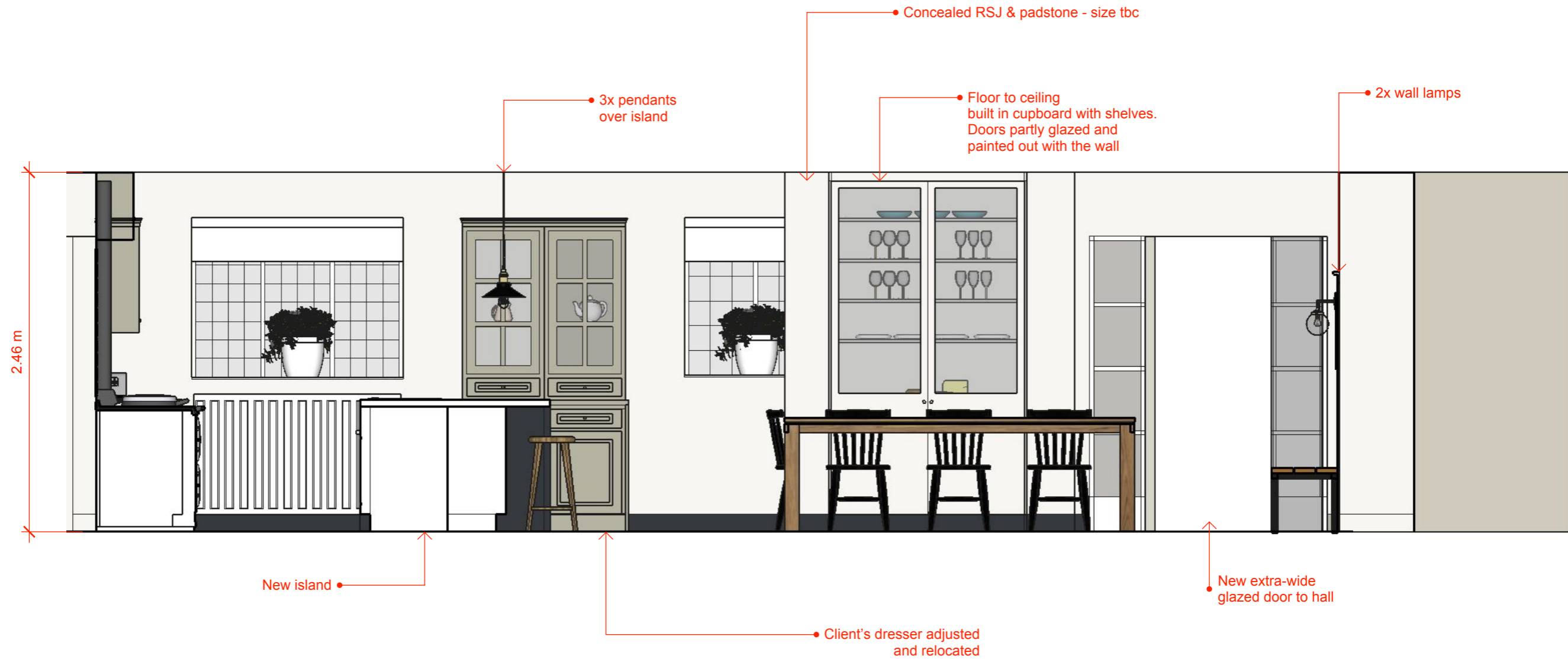
• New shelves for extra storage

• Client's existing coat hooks & bench

• Dark wall colour makes furniture pop.

VIEW INTO COAT CUPBOARD

PLEASE NOTE: This is an initial concept design. ALL ROOM DIMENSIONS ARE APPROXIMATE and must be checked by the supplier and contractors before orders are placed and work begins. ALL CABINET/FURNITURE SIZES ARE SUGGESTIONS and are subject to change acc. to the kitchen joiner's method of construction. JOINER & FITTER TO CHECK new appliances installation instructions before construction and fitting.



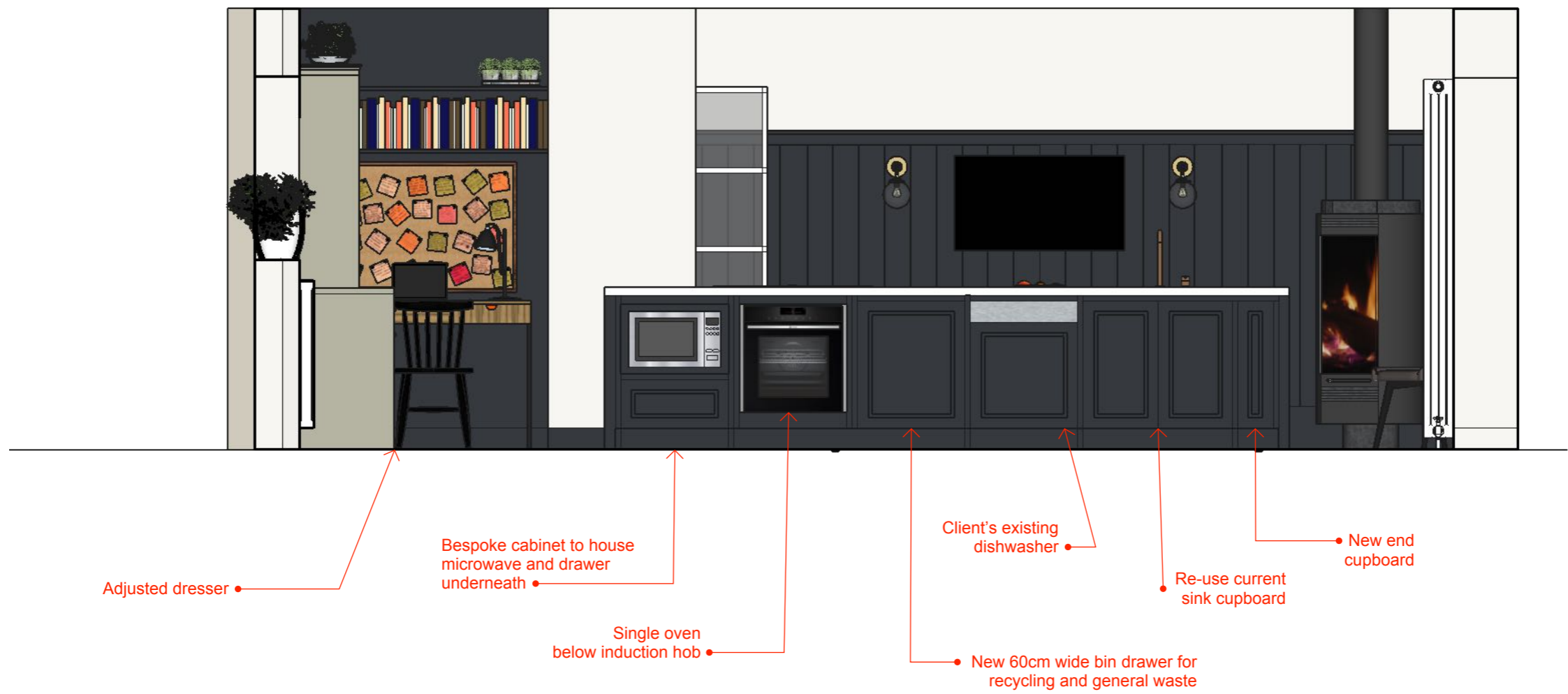
ELEVATION FACING FRONT OF HOUSE

PLEASE NOTE: This is an initial concept design. ALL ROOM DIMENSIONS ARE APPROXIMATE and must be checked by the supplier and contractors before orders are placed and work begins. ALL CABINET/FURNITURE SIZES ARE SUGGESTIONS and are subject to change acc. to the kitchen joiner's method of construction. JOINER & FITTER TO CHECK new appliances installation instructions before construction and fitting.



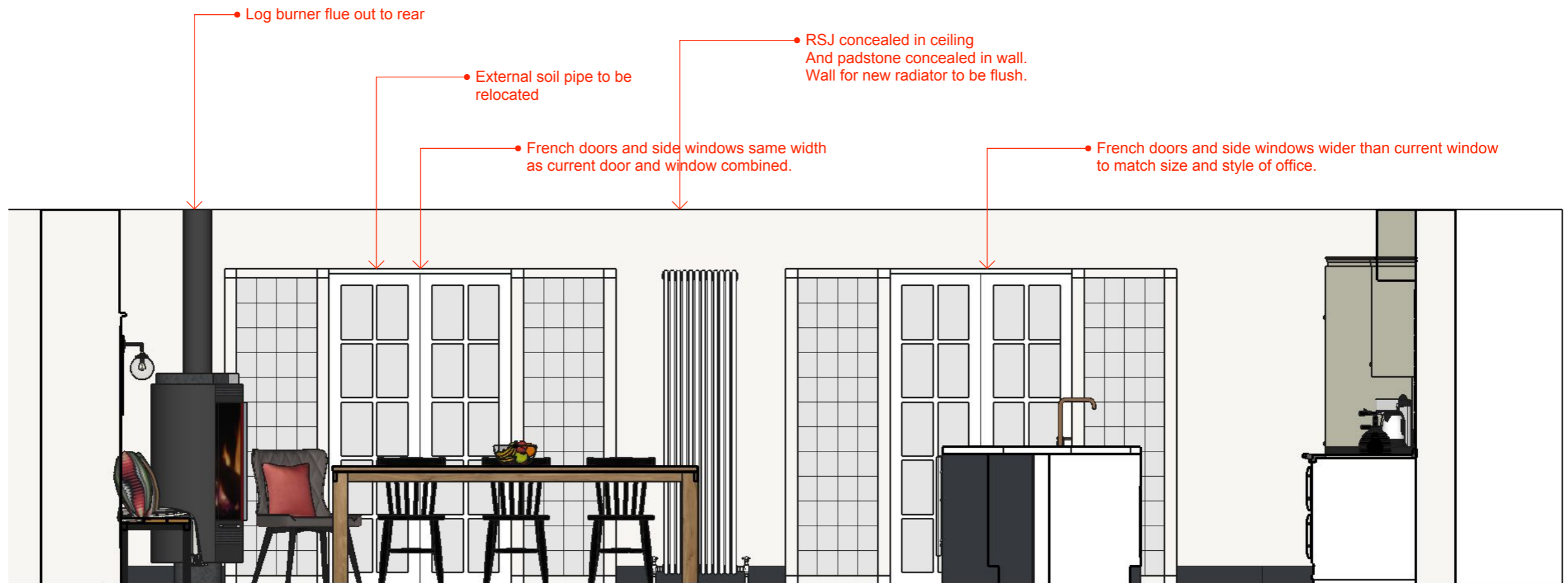
ELEVATION OF DINING AREA

PLEASE NOTE: This is an initial concept design. ALL ROOM DIMENSIONS ARE APPROXIMATE and must be checked by the supplier and contractors before orders are placed and work begins. ALL CABINET/FURNITURE SIZES ARE SUGGESTIONS and are subject to change acc. to the kitchen joiner's method of construction. JOINER & FITTER TO CHECK new appliances installation instructions before construction and fitting.



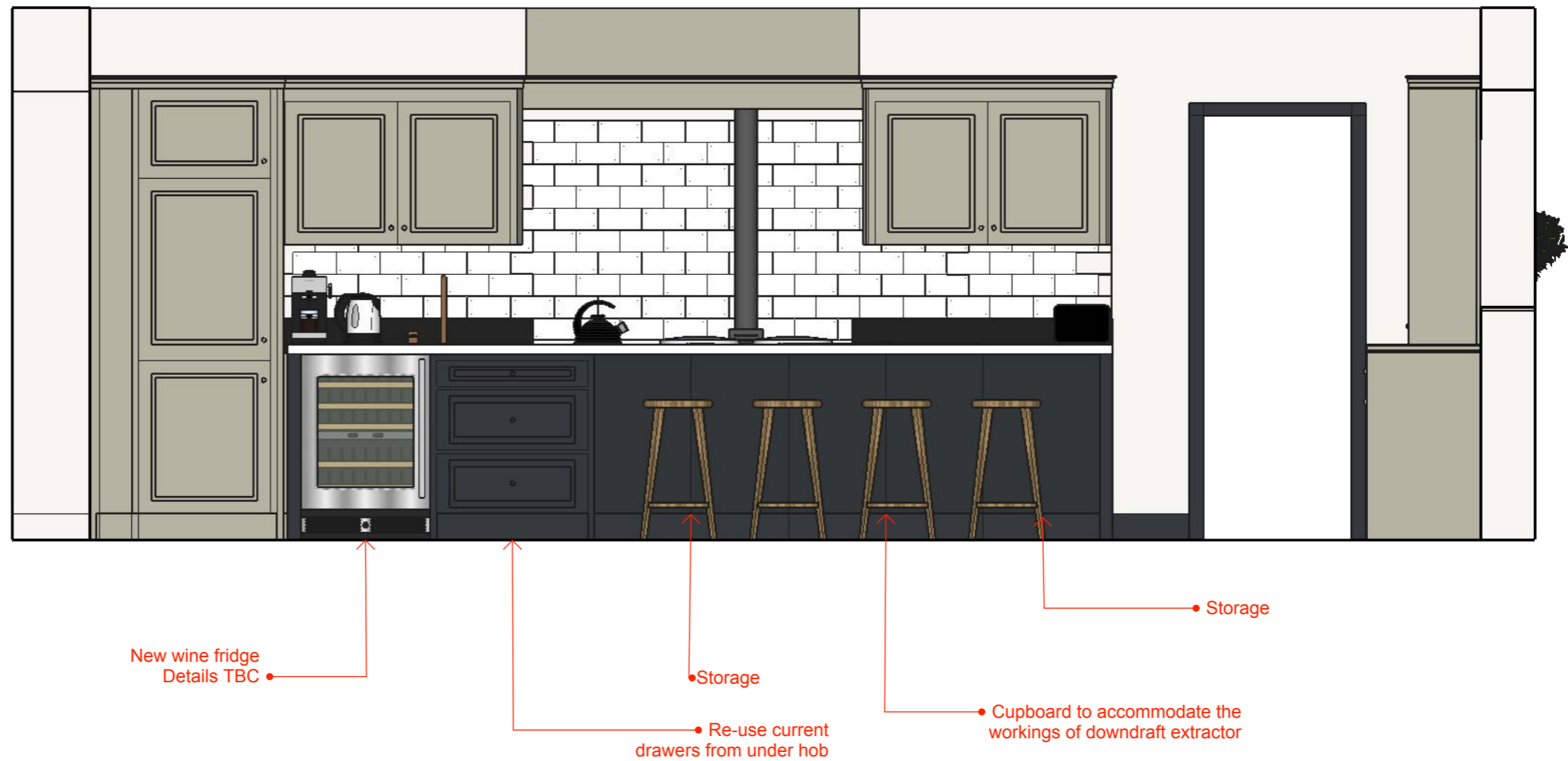
ELEVATION OF ISLAND FROM AGA

PLEASE NOTE: This is an initial concept design. ALL ROOM DIMENSIONS ARE APPROXIMATE and must be checked by the supplier and contractors before orders are placed and work begins. ALL CABINET/FURNITURE SIZES ARE SUGGESTIONS and are subject to change acc. to the kitchen joiner's method of construction. JOINER & FITTER TO CHECK new appliances installation instructions before construction and fitting.



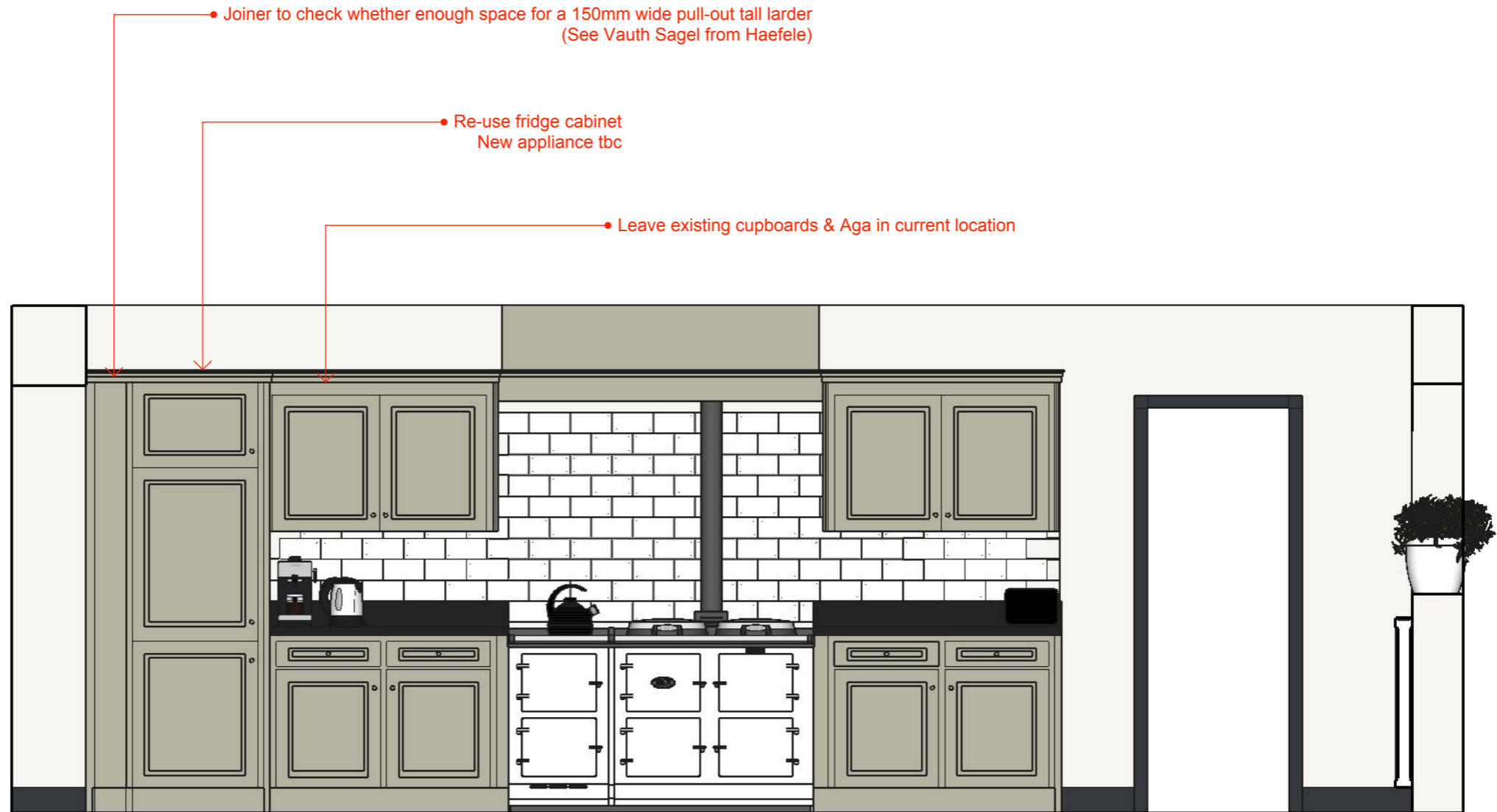
ELEVATION FACING REAR OF HOUSE

PLEASE NOTE: This is an initial concept design. ALL ROOM DIMENSIONS ARE APPROXIMATE and must be checked by the supplier and contractors before orders are placed and work begins. ALL CABINET/FURNITURE SIZES ARE SUGGESTIONS and are subject to change acc.to the kitchen joiner's method of construction. JOINER & FITTER TO CHECK new appliances installation instructions before construction and fitting.



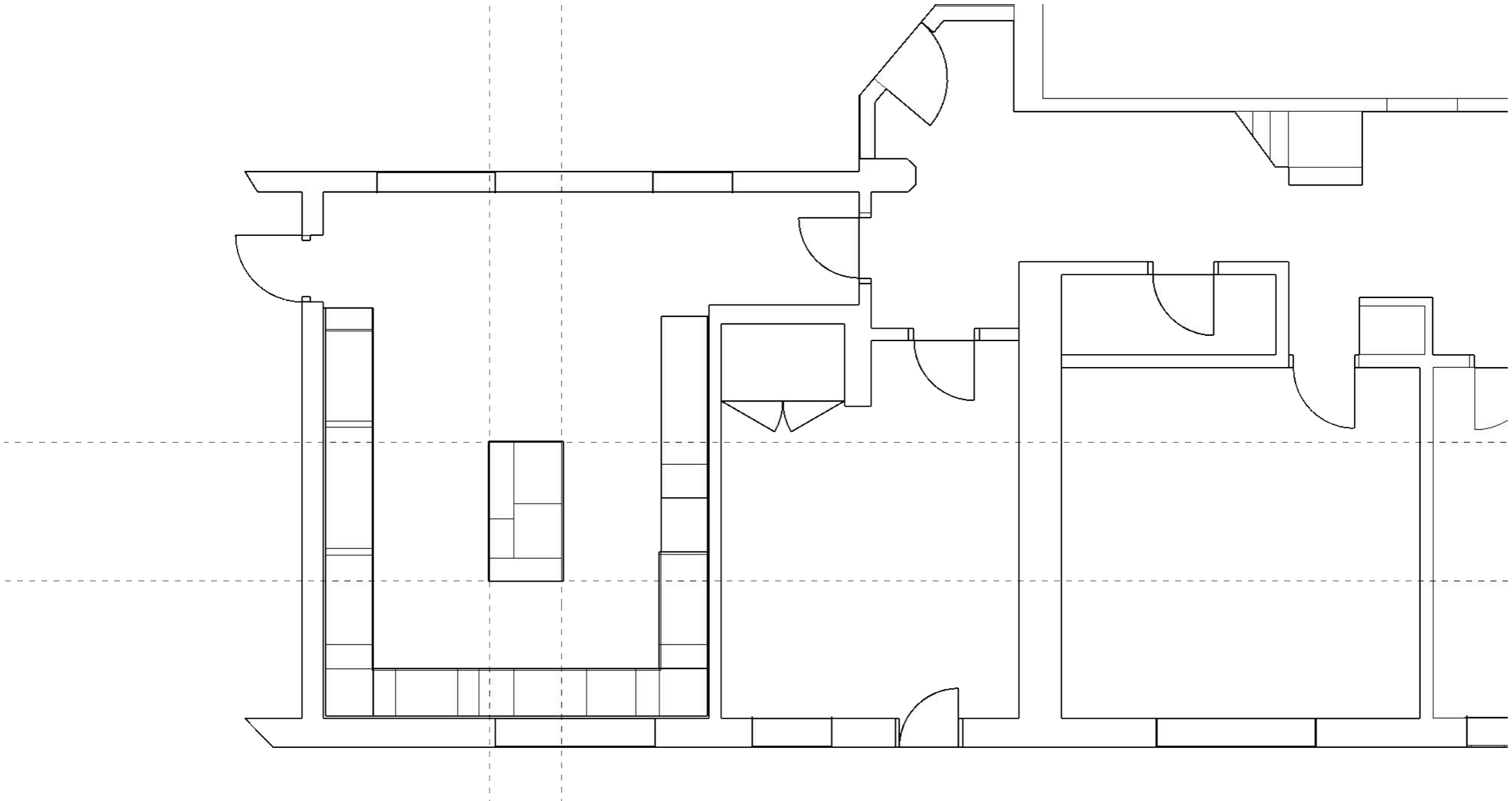
ELEVATION OF ISLAND FROM DINING AREA

PLEASE NOTE: This is an initial concept design. ALL ROOM DIMENSIONS ARE APPROXIMATE and must be checked by the supplier and contractors before orders are placed and work begins. ALL CABINET/FURNITURE SIZES ARE SUGGESTIONS and are subject to change acc.to the kitchen joiner's method of construction. JOINER & FITTER TO CHECK new appliances installation instructions before construction and fitting.



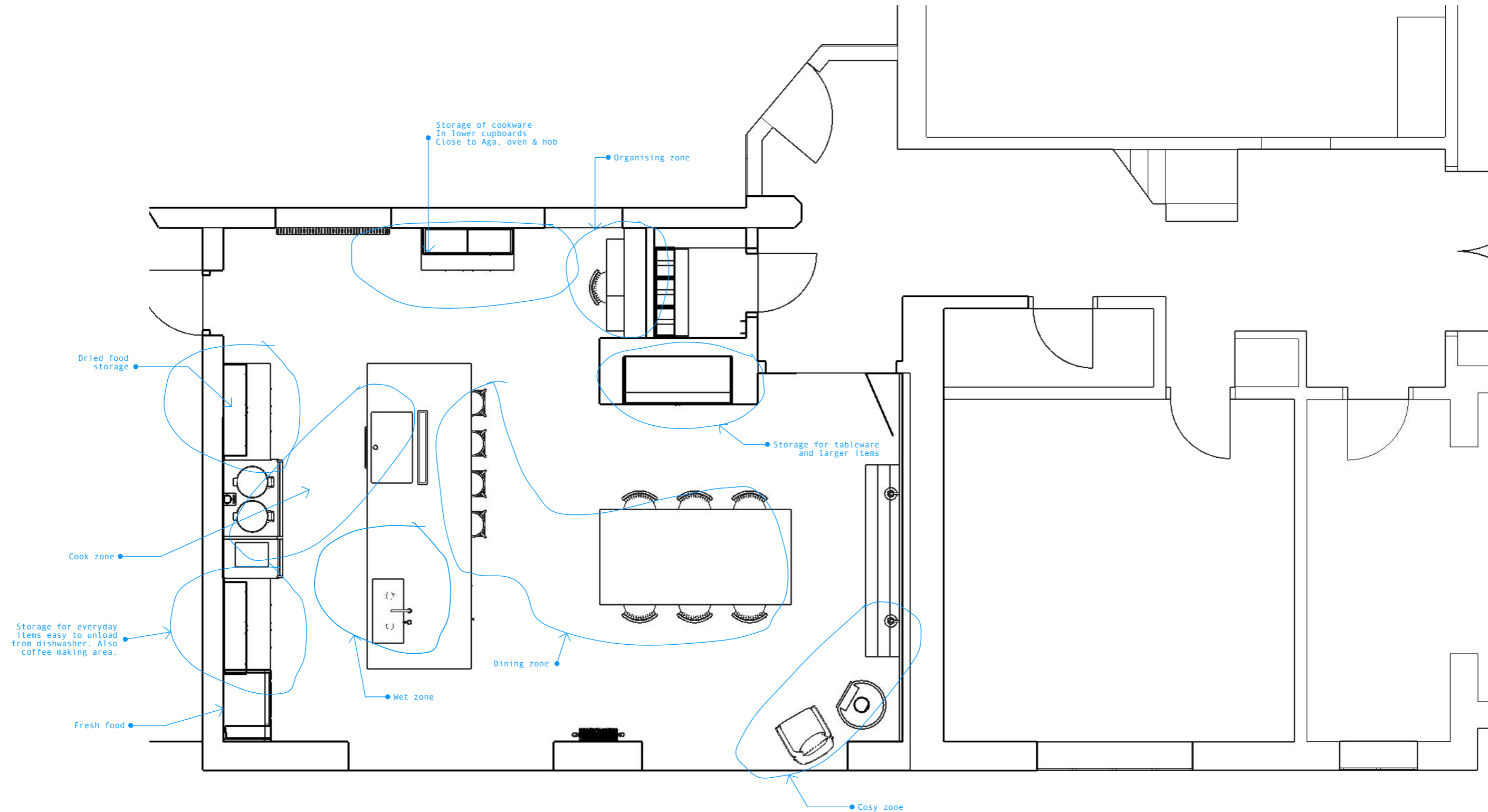
ELEVATION OF AGA RUN

PLEASE NOTE: This is an initial concept design. ALL ROOM DIMENSIONS ARE APPROXIMATE and must be checked by the supplier and contractors before orders are placed and work begins. ALL CABINET/FURNITURE SIZES ARE SUGGESTIONS and are subject to change acc. to the kitchen joiner's method of construction. JOINER & FITTER TO CHECK new appliances installation instructions before construction and fitting.



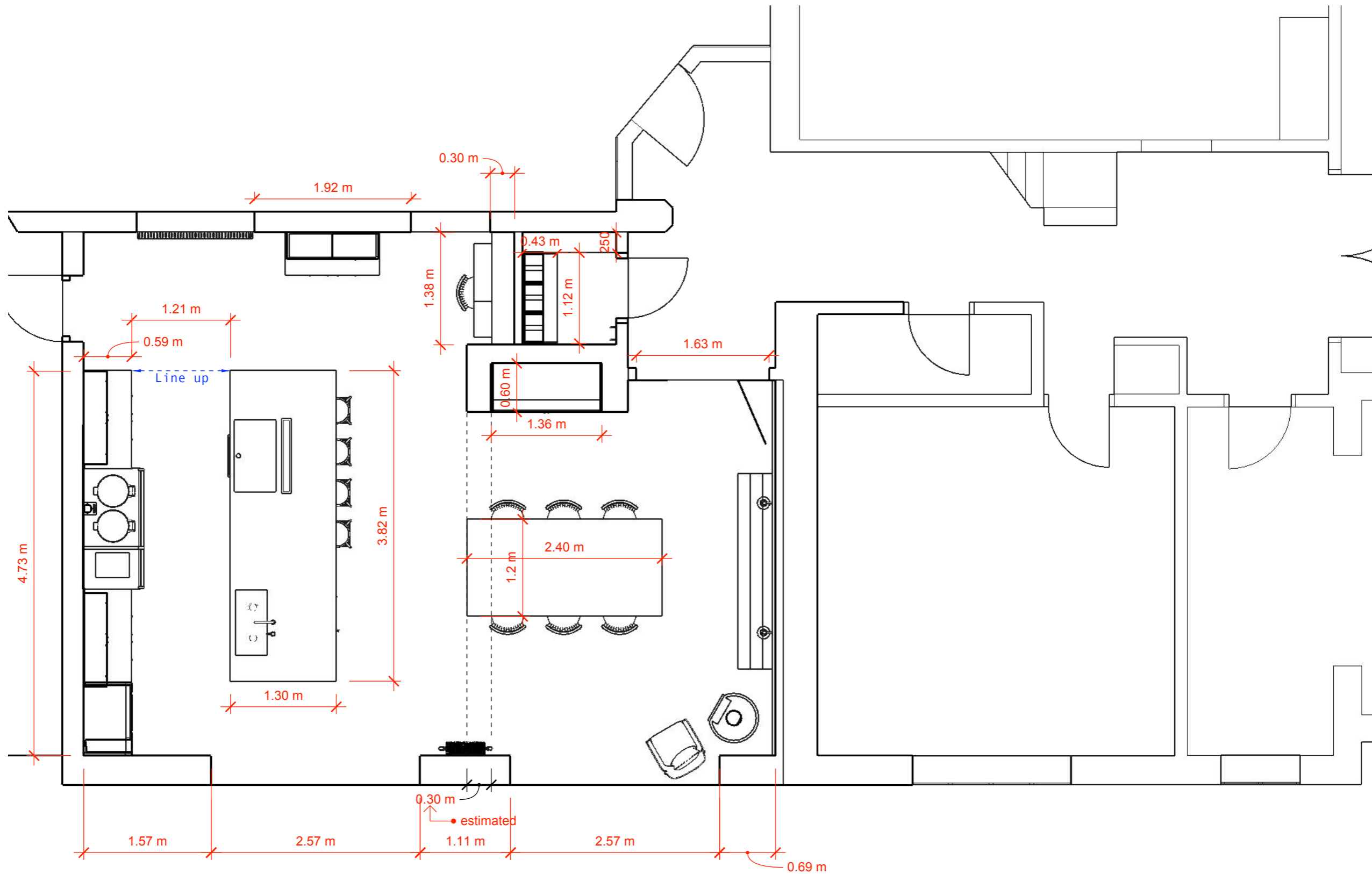
PLAN OF CURRENT LAYOUT

PLEASE NOTE: ALL ROOM DIMENSIONS ARE APPROXIMATE.



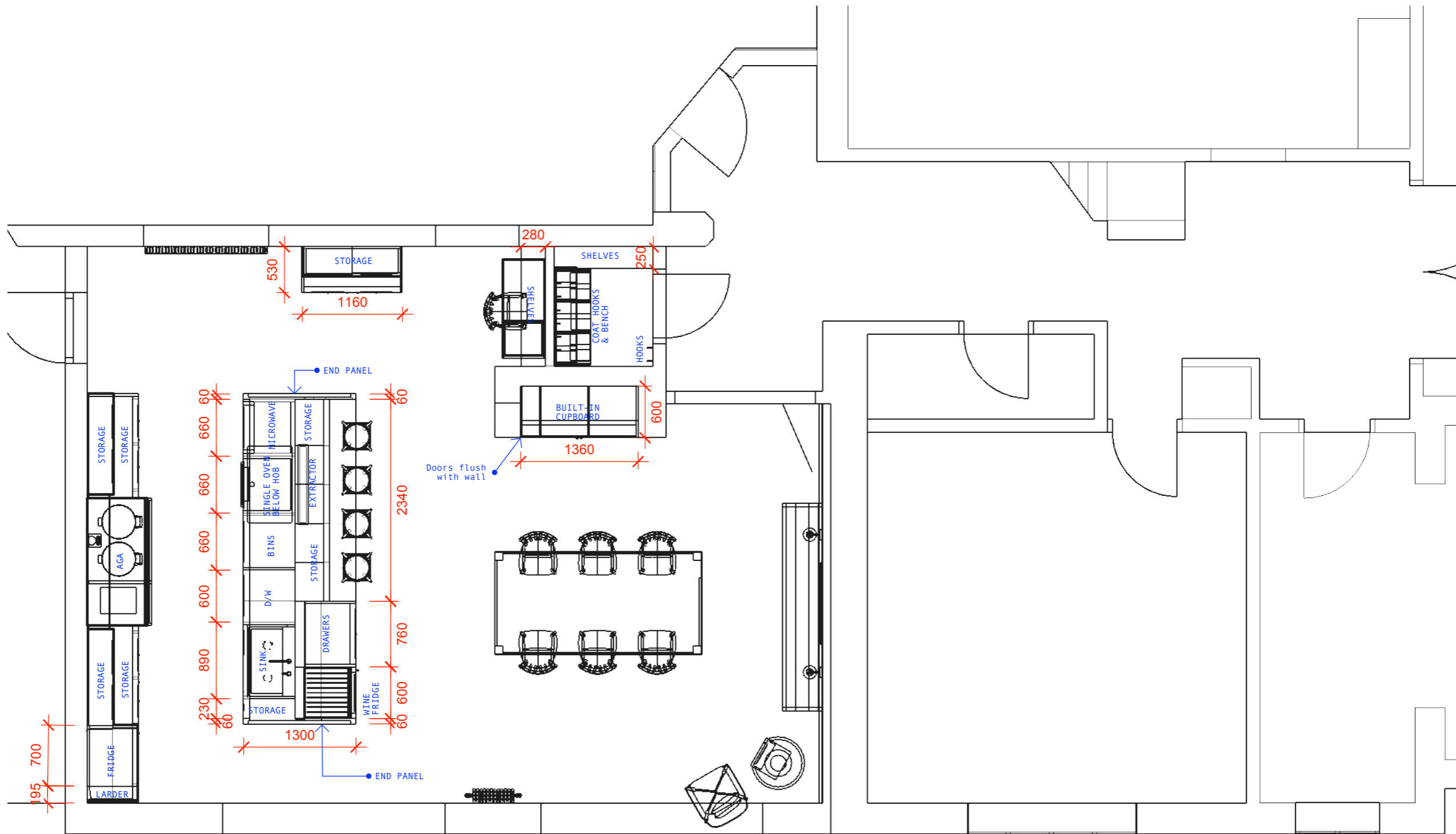
PLAN OF ZONES

PLEASE NOTE: This is an initial concept design. ALL ROOM DIMENSIONS ARE APPROXIMATE and must be checked by the supplier and contractors before orders are placed and work begins. ALL CABINET/FURNITURE SIZES ARE SUGGESTIONS and are subject to change acc. to the kitchen joiner's method of construction. JOINER & FITTER TO CHECK new appliances installation instructions before construction and fitting.



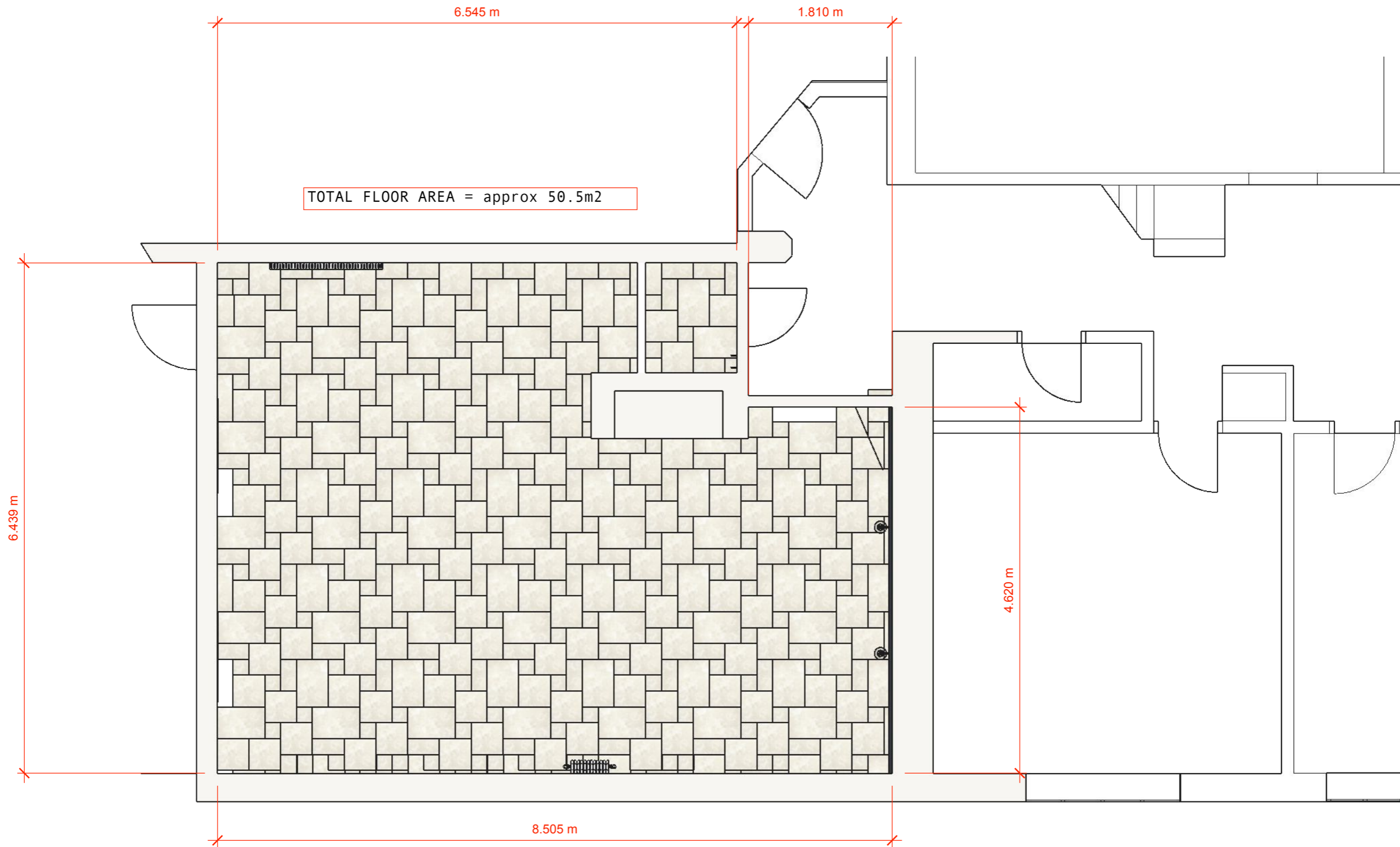
PLAN WITH DIMENSIONS (a) in metres

PLEASE NOTE: This is an initial concept design. ALL ROOM DIMENSIONS ARE APPROXIMATE and must be checked by the supplier and contractors before orders are placed and work begins. ALL CABINET/FURNITURE SIZES ARE SUGGESTIONS and are subject to change acc. to the kitchen joiner's method of construction. JOINER & FITTER TO CHECK new appliances installation instructions before construction and fitting.



PLAN WITH DIMENSIONS (b) in millimetres

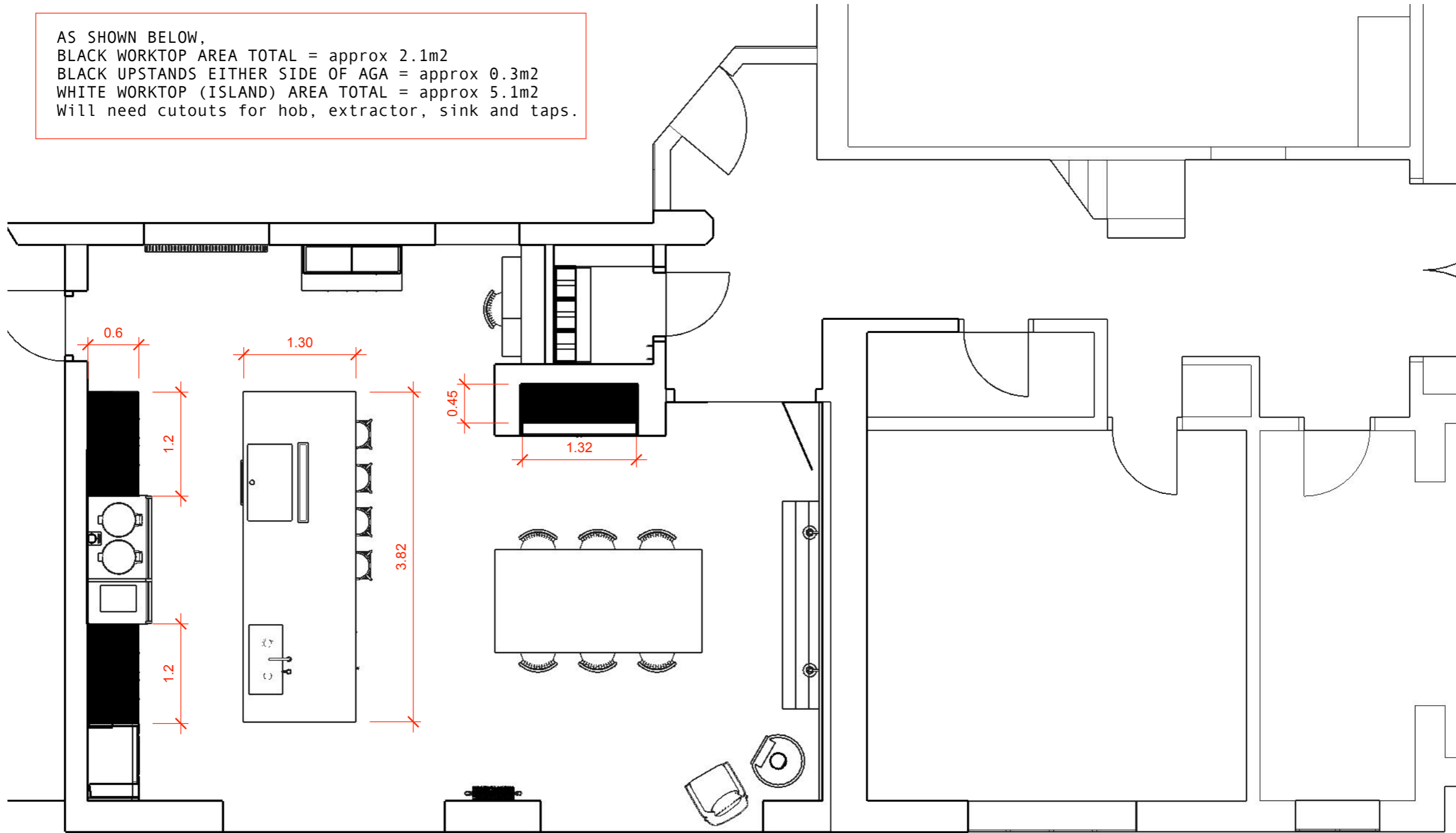
PLEASE NOTE: This is an initial concept design. ALL ROOM DIMENSIONS ARE APPROXIMATE and must be checked by the supplier and contractors before orders are placed and work begins. ALL CABINET/FURNITURE SIZES ARE SUGGESTIONS and are subject to change acc. to the kitchen joiner's method of construction. JOINER & FITTER TO CHECK new appliances installation instructions before construction and fitting.



PLAN OF FLOORING (dimensions in metres)

PLEASE NOTE: ALL ROOM DIMENSIONS ARE APPROXIMATE. For the purpose of obtaining quotations. On-site measurements must be obtained by supplier/fitter before order is placed

AS SHOWN BELOW,
BLACK WORKTOP AREA TOTAL = approx 2.1m²
BLACK UPSTANDS EITHER SIDE OF AGA = approx 0.3m²
WHITE WORKTOP (ISLAND) AREA TOTAL = approx 5.1m²
Will need cutouts for hob, extractor, sink and taps.



PLAN OF WORKTOPS

PLEASE NOTE: ALL ROOM DIMENSIONS ARE APPROXIMATE. For the purpose of obtaining quotations. On-site measurements must be obtained by supplier/fitter before order is placed

| Description | Approx size (TBC) W X H X D in mm excluding trim at top | From: | Used for: | Notes: |
|---|---|----------|---|--|
| AGA RUN (RIGHT TO LEFT) | | | | |
| BASE DOUBLE CUPBOARD - 2 DOORS | 1200 x 870 x 590 | In place | Dried food | This side of the Aga will now become the 'larder' for all dried foods: packets; tins, etc. Cooking utensils in drawers. |
| WALL DOUBLE CUPBOARD - 2 DOORS | 1150 x 725 x 290 | In place | Dried food | As above. |
| AGA | | In place | | |
| BASE DOUBLE CUPBOARD - 2 DOORS | 1200 x 870 x 590 | In place | Dinner plates, side plates, bowls; cutlery in drawers | Place most used daily items here for easy unloading from dishwasher |
| WALL DOUBLE CUPBOARD - 2 DOORS | 1150 x 725 x 290 | In place | Coffee, tea, biscuits; Cafetieres; mugs; | As above. |
| TALL END PANEL | 30 x 2090 x 590 | Bespoke | | |
| TALL FRIDGE CABINET | 670 x 2090 x 590 | Re-use | Fresh food | Hinge on left |
| INTEGRATED FRIDGE | Tbc | New | | Check dimensions will fit existing cabinet. |
| if there is space, TALL PULL-OUT LARDER | 150 x 2090 x 590 | Bespoke | Spices, oils, vinegars; medicines at top | Purchase internal wire pull-out fixture from Haeefe |
| FILLER | To fit | Bespoke | | |
| ISLAND RUN (SINK SIDE; RIGHT TO LEFT) | | | | |
| END PANEL WITH POSTS | To fit | Bespoke | | |
| BASE CUPBOARD - SINGLE DOOR | 230 x 870 x 600 | Bespoke | Chopping boards | Hinge on right. One shelf? Maybe able to reuse parts from other cabinets |
| BASE SINK DOUBLE CUPBOARD - 2 DOORS | 890 x 870 x 600 | Re-use | Cleaning products | |
| DOUBLE UNDERMOUNTED CERAMIC SINK | 800 wide | New | | |
| TAP | | New | | |
| DISHWASHER | 600 wide | Re-use | | |
| SEMI-INTEGRATED D/W DOOR PANEL | 600 wide | Re-use | | |
| BASE PULL-OUT CUPBOARD FOR BINS | 660 x 870 x 600 | Bespoke | General and recycling. | Purchase internal pull-out bin to separate refuse from Haeefe to fit 600 wide cupboard |
| BASE CABINET FOR SINGLE OVEN | 660 x 870 x 600 | Bespoke | | To fit new appliance. |
| SINGLE OVEN | 595 wide tbc | New | | See notes below for hob. |
| INDUCTION HOB | 800-900 wide tbc | New | | Before purchase, check the installation guide to ensure that the hob will be able to sit above the oven. I have assumed you will have a worktop 30mm deep. |
| BASE CABINET FOR INTEGRATED MICROWAVE OVEN; DRAWER BELOW | 660 x 600 x 870 | Bespoke | Baking sheets & tins in bottom drawer | To fit new appliance. |
| INTEGRATED MICROWAVE | tbc | New | | |
| END PANEL WITH POSTS | To fit | Bespoke | | |
| ISLAND RUN (BAR SIDE; LEFT TO RIGHT) | | | | |
| BASE CUPBOARD - SINGLE DOOR | approx 540 x 870 x 400 | Bespoke | Snacks, juice & alcohol bottles | Hinge on right; one shelf |
| BASE DOUBLE CUPBOARD TO HOUSE DOWNDRAFT EXTRACTOR - 2 DOORS | approx 900 x 870 x 400 | Bespoke | Extractor workings | This cabinet to be made first to fit the extractor workings and then remaining adjacent cabinets to fit around it. |
| DOWNDRAFT EXTRACTOR | tbc | New | | |
| BASE CUPBOARD DOUBLE CUPBOARD - 2 DOORS | approx 900 x 870 x 400 | Bespoke | Tupperware & water bottles | One shelf |
| BASE DRAWERS - 3 DRAWERS | 760 x 870 x 600 | Re-use | tin foil, napkins; tea towels & oven gloves; seives/spinner | Originally under hob. |
| WINE FRIDGE | approx 600 wide tbc | New | | |
| DRESSER ADJUSTED | | | | |
| BASE DRESSER 2 CUPBOARDS | 1850 x 870 x 530 | Re-use | ovenware; pots & pans | Close to hob/aga |
| 2 GLAZED CUPBOARDS ABOVE | 1550 x 20 x 215 | Bespoke | middle shelf for cards & knick knacks; top/bottom shelf for everyday glassses; water jugs | |
| BUILT-IN CUPBOARD | | | | |
| FLOOR-TO-CEILING, PARTIALLY GLAZED DOUBLE DOORS, SHELVES WITHIN | 1360 x 2460 x 600 tbc | Bespoke | Trays; breadmaker & mixers at bottom; serving shelf in middle; upper shelves for occasional dinnerware; special glasses; serving platters, bowls, cake stand etc. | Discuss heights of shelves with joiner |

CABINETS & APPLIANCES

PLEASE NOTE: Some cabinets from current kitchen are remaining in place. Some cabinets from current kitchen will be reused and relocated. Form and size for new bespoke cabinets are a suggestion based on existing kitchen. These are subject to changes depending on the joiner's advice and method of construction. Before purchasing new appliances, please check the size and installation details. Consult with your joiner if need be. Before joiner constructs a cabinet that contains an appliance, the installation instructions and dimensions should be checked.